



EViTRADE Health Systems Corporation

ABOUT EVITRADE HEALTH SYSTEMS CORP

We provide online services for both remote supervised and autonomous self-managing and monitoring cardio-metabolic health problems. Our fully automated self-care plans include monitoring, testing, tracking, and treating various health conditions. We focus on monitoring and assisting practising patients with heart arrhythmia, blood pressure, blood glucose, body weight, and skin conditions.

CUSTOMIZATION of Health Monitoring System

We can work with health practitioners to customize a health monitoring system for remote monitoring of patients through a blood pressure monitor with interactive protocols connected to our online medical expert system.

MARKET

Practicing patients interested in monitoring and normalizing heart arrhythmia, blood pressure, blood glucose, body weight, and skin conditions. Main target market: Weight Management (\$60 billion) & Skin Health (Acne \$2.8 - \$11 billion), and general Cardio-Metabolic Conditions.

PRODUCT

Therapeutic and Diagnostic (Theranostic) Medical Device that is approved in Canada and EU as a Blood Pressure monitor with Interactive Protocols. This device is part of an Electro-Physiologically Interactive Computing system that interfaces with the user, bio-mechanically, for health conditioning treatments.

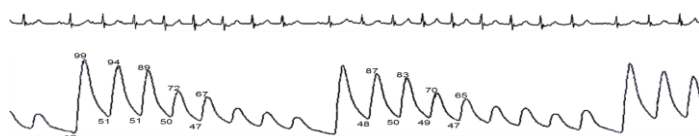
SERVICES

Online testing, tracking, and treating health conditions using real-life, real-time patient data.

DATA

Instantaneous results of patient or user data recorded and uploaded onto software system.

ECG (top) vs TULIP (lower) readout



Example of a TULIP(TM) Heart Trace - useful and in providing and recording a visual record as to a potential heart health concern.

REVENUE MODEL

Yearly Subscription, multi-threaded revenue stream.

VALUE PROP

Simpler, Faster, Safer at a fraction of competitors' cost.

ORDER TIMELINE

Currently Commercial Pilots; Large study orders will require lead-times for manufacturing of hardware units; hardware can be shared amongst more than one user upon registration of multiple users on the software system.

EViTrade Health Systems Corp.
#168-11280 Twigg Place
Richmond, BC V6V 0A6
T: +1 (604) 780-3311
E: info@auxellence.com
www.auxellence.com



Stock Markets

Canadian Stock Exchange (CSE)
OTC Markets (OTCQB)

Symbols

CSE: EVA
OTCQB: AXHLF

52 Week Price Range

\$0.30 - \$3.15 (AS OF JAN 2017)

Shares o/s

7,790,265 (January 26, 2017)

Reserved for Issuance

1,400,000 (to Director-Secured Credit Loan)
1,708,440 (from Warrants)

Industry Codes

(NAICS) 51121

Financial Data

Available on SEDAR

Directors & Officers

Sydney Au, *Chairman & CEO* (604) 780-3311
Faisal Manji, CPA, *Director and CFO*
Ronald Ozols, *Director*